

Introducing VDO Viewline

Our engineers started with a clean sheet of paper and a worldwide view to create an instrument line like no other in today's market. Their goal to create an instrument with flexibility, class and integrity is something you've come to expect from VDO.

Viewline begins with a fresh style and three choices of instrument sizes. For styling, you have a choice of dial face colors of Onyx, Ivory or Sterling. Next we added two choices of bezel styles along with three choices of bezel colors: white, black and chrome. To complete your selection we offer you three choices of instrument sizes: 110mm, 85mm and 52mm, giving you more flexibility than ever before to create the instrument you are looking for.

VDO engineers did not stop with just a pretty face. Next, they added integrity. The use of fully sealed dual lens, lifetime LED lighting and warning indicators assures that Viewline can easily withstand even open cab environments.

Whether you are looking for standard or customized products, you are truly getting "more bang for your buck" with Viewline.

The VDO Heritage: Reliability, durability and accuracy.

Reliability

- IP67 water resistance means, that no matter how wet it gets, our gauges keep on working.
- Anti-corrosion materials mean no oxidation or rust will develop – Viewline will continue to work and look like new.

Accuracy

- VDO patented stepper motors and resistive movements.
- OEM derived technology in every instrument.

Durability

- CE certification.
- UL94 flame resistance.
- Tested to 25 G continuous vibration and 100 G shock.
- 100% LED warning lights and telltales for long service life.



mph

2011

VDO



Viewline Ivory with chrome triangle bezel

VDO Viewline: Standard or customized, you get "more bang for your buck!"

Standard features on all Viewline speedometers:

- LCD shows odometer, trip odometer, voltage and clock
- Warning alarm output
- Speed warning indicator on all speedometers

Available Viewline speedometer features:

- Turn signal indicators
- Emergency brake warning
- High beam indicator



Speedometers available in 85mm
and 110mm diameters



Viewline Onyx with chrome triangle bezel

Standard features on all Viewline tachometers:

- LCD shows odometer, trip odometer, voltage and clock
- User defined engine speed warning indicator
- Warning alarm output on all 85mm and 110mm tachometers



Tachometers available in 52mm, 85mm and 110mm diameters

Viewline 52mm resistive, frequency and specialty instruments

Available variants include:

- Single and dual scale
- With or without ISO symbols
- LED warning light standard on all 52mm Viewline gauges



Builders can choose surface mount with bezel or back mount to flush with panel.



Viewline Onyx with round black bezel

VDO Viewline:
 OEM technology. OEM quality.
 In each and every instrument.





Viewline Ivory with round black bezel

1. Spin-Lok™ mounting – a VDO innovation developed to safeguard against mounting panel warping and make installation fast and easy.
2. Single PCB increases reliability and minimizes instrument depth.
3. Built-in LED warning indicators (up to 5) are programmable to OEM-specified function.
4. Single cavity connectors reduce wiring installation time.
5. Reverse polarity and over voltage protection virtually eliminate the possibility of installation failures.
6. VDO is one of the few companies in the world to design, patent and manufacture stepper motors and resistive movements.
7. Corrosion-free and flame retardant materials comply with manufacturer's latest specifications.
8. Laser welded lenses ensure the highest level of protection against water intrusion.
9. Dual domed lenses eliminate fogging – another VDO innovation.
10. LED lit pointers and "through dial lighting" minimize current consumption while optimizing nighttime viewing.
11. Detail finish ring enhances the overall appearance of finished instrument – a VDO exclusive.
12. Designed to withstand continuous 25 G vibrations and 100 G single shock, to ensure maximum reliability of each instrument.
13. Large, multifunction backlit LCD provides easy readout of programmed functions.
14. Customer installed bezels with nine style choices allow for greater styling differentiation between product lines.



VDO Spin-Lok™ mounting



Viewline Onyx



Viewline Onyx with chrome bezel 6 gauge kit

Complete Instrument Kits

600 97426	6 Instrument Kit with GM Transmission Sender, 3 3/4" Speedometer & Tachometer. Flush Mount Application
600 97126	6 Instrument Kit with GM Transmission Sender, 3 3/4" Speedometer & Tachometer and Chrome Bezels
600 97021	5 Instrument Kit with GM Transmission Sender, 3 3/4" Speedometer and Black Bezels
600 970216	6 Instrument Kit with Ford Transmission Sender, 3 3/4" Speedometer & Tachometer. Flush Mount Application
600 974216	6 Instrument Kit with Ford Transmission Sender, 3 3/4" Speedometer & Tachometer. Flush Mount Application
600 971216	6 Instrument Kit with Ford Transmission Sender, 3 3/4" Speedometer & Tachometer and Chrome Bezels
600 97026	6 Instrument Kit with Ford Transmission Sender, 3 3/4" Speedometer & Tachometer and Black Bezels
600 9742	5 Instrument Kit with GM Transmission Sender, 3 3/4" Speedometer. Flush Mount Application
600 9712	5 Instrument Kit with GM Transmission Sender, 3 3/4" Speedometer and Chrome Bezels
600 97421	5 Instrument Kit with Ford Transmission Sender, 3 3/4" Speedometer. Flush Mount Application
600 97121	5 Instrument Kit with Ford Transmission Sender, 3 3/4" Speedometer and Chrome Bezels
600 9702	5 Instrument Kit with Ford Transmission Sender, 3 3/4" Speedometer and Black Bezels

Instrument Kit Contents

- 120 MPH Electronic Speedometer with Turn Signal, Emergency Brake and High-Beam Warning Lights
- 80 PSI Oil Pressure Gauge, Electrical
- 250°F Temperature Gauge, Electrical
- Fuel Gauge
- 8-16V Voltmeter
- 221°F Temperature Switch
- 250°F Temperature Sender
- 80 PSI Pressure Sender with low pressure warning contact

- GM or Ford Speedometer Sender
- ALAS 1 6"-15" Adjustable Length Fuel Sender
- 1/8x27 NPT x1/4", 3/8" and 1/2" adapter kit for pressure sender
- 1/2" Adapter for Temperature Sender

6 Gauge Kits include matching 8,000 RPM Tachometer

See page 65 for complete wire harness assembly

Programmable Speedometers with Autocalibration & Multifunction LCD Tripodometer



Speedometers feature 1-button auto calibration programming, user defined speed warning, left & right turn signals, e-brake warning and high-beam indicator. LCD features odometer, trip odometer, voltage and clock. Accepts signal inputs from Hall Effect and inductive sender and most electronic controlled transmission outputs.

Catalog Number	Description	See Bezel Table
A2C53408268-S	120mph 3 3/4" (85mm) Electronic Speedometer with Warning Lights & Autocalibration 12/24V	Table 15

ISSDistribution.com - Call (800) 333-7976

See page 58 for speedometer senders

For technical specifications and dimensions, please visit our website at www.vdo.com/usa



Viewline Onyx with chrome round bezel

Programmable Speedometers with Autocalibration & Resettable LCD Tripodometer



Speedometers feature 1-button auto calibration programming and user defined speed warning. LCD features odometer, trip odometer, voltage and clock. Accepts signal inputs from Hall Effect and inductive sender and most electronic controlled transmission outputs.

Catalog Number	Description	See Bezel Table
A2C53194639-S	120mph 4" (110mm) Electronic Speedometer 12/24V	Table 16
A2C53194765-S	160mph 3 3/8" (85mm) Electronic Speedometer 12/24V	Table 15
A2C53194759-S	120mph 3 3/8" (85mm) Electronic Speedometer 12/24V	Table 15

Programmable Tachometers with Multifunction LCD



Programmable tachometers feature: User defined rev. limit warning, LCD display for total hours resettable hours, voltage and clock. Accepts inputs from most electronic controlled ignitions with tachometer output terminal, standard coil ignition, alternator signal and 12V square.

Catalog Number	Description	See Bezel Table
A2C53194885-S	8,000 RPM 3 3/8" (85mm) Tachometer with 2 Hourmeters, Clock and Voltmeter 12/24V	Table 15
A2C53194872-S	6,000 RPM 3 3/8" (85mm) Tachometer with 2 Hourmeters, Clock and Voltmeter 12/24V	Table 15
A2C53194590-S	8,000 RPM 4" (110mm) Tachometer with 2 Hourmeters, Clock and Voltmeter 12/24V	Table 16
A2C53194593-S	6,000 RPM 4" (110mm) Tachometer with 2 Hourmeters, Clock and Voltmeter 12/24V	Table 16

ISSDistribution.com - Call (800) 333-7976

See page 58 for speedometer senders

For technical specifications and dimensions, please visit our website at www.vdo.com/usa

Viewline Onyx



Viewline Onyx with white round bezel

Programmable Tachometers



Programmable tachometers feature: Accepts signal inputs from 2, 4, 6, 8, 10, 12 & 16 cylinder standard coil ignition, alternator signal and 12V square wave applications.

Catalog Number	Description	See Bezel Table
A2C53218726-S	6,000 RPM 3 3/8" (85mm) Tachometer 12/24V	Table 15
A2C53218722-S	4,000 RPM 3 3/8" (85mm) Tachometer 12/24V	Table 15
A2C53218713-S	7,000 RPM 4" (110mm) Tachometer 12/24V	Table 16
A2C53218716-S	3,000 RPM 3 3/8" (85mm) Tachometer 12/24V	Table 15
A2C53408405-S	8,000 RPM 3 3/8" (85mm) Tachometer 12/24V	Table 15

Fluid Temperature Gauges, Electrical, 2 1/16" (52mm) Dia



Catalog Number	Description	See Bezel Table	See Sender Table
A2C53191722-K1	250F/120C Water Temperature Gauge with VDO Sender and US Thread Adapters	Table 14	
A2C53191722-K2	250F/120C Water Temperature Gauge with VDO Sender and Metric Thread Adapters	Table 14	
A2C53191722-S	250F/120C Water Temperature Gauge 12V, Use with VDO Sender	Table 14	A
A2C53191360-S	250F Water Temperature Gauge, Use with VDO Sender	Table 14	A
A2C53191723-S	300F/150C Oil Temperature Gauge 12V, Use with VDO Sender	Table 14	B
A2C53191360-K1	250F Water Temperature Gauge with VDO Sender and US Thread Adapters	Table 14	
A2C53191360-K2	250F Water Temperature Gauge with VDO Sender and Metric Thread Adapters	Table 14	

ISSDistribution.com - Call (800) 333-7976

See pages 56-57 for temperature senders

For technical specifications and dimensions, please visit our website at www.vdo.com/usa



Viewline Onyx with white triangle bezel

Outside Temperature Gauges, Electrical, 2 1/16" (52mm) Dia



Catalog Number	Description	See Bezel Table
A2C53210847-K	-10/+120F Outside Temperature Gauge with VDO Sender	Table 14

Pyrometer, Electrical, 2 1/16" (52mm) Dia



Catalog Number	Description	See Bezel Table
A2C53210907-K	1600F Pyrometer with VDO Sender	Table 14

Oil Pressure Gauges, Electrical, 2 1/16" (52mm) Dia



Catalog Number	Description	See Bezel Table	See Sender Table
A2C53191733-S	80PSI/5bar Oil Pressure Gauge 12V, Use with VDO Sender	Table 14	1
A2C53191733-K1	80PSI/5bar Gauge & Sender Kit with US Thread Adapters	Table 14	
A2C53191733-K2	80PSI/5bar Gauge & Sender Kit with Metric Thread Adapters	Table 14	
A2C53191383-S	80PSI Oil Pressure Gauge, Use with VDO Sender	Table 14	1
A2C53191736-S	150PSI/10bar Oil Pressure Gauge 12V, Use with VDO Sender	Table 14	5
A2C53191736-K1	150PSI/10bar Gauge & Sender Kit with US Thread Adapters	Table 14	
A2C53191736-K2	150PSI/10bar Gauge & Sender Kit with Metric Thread Adapters	Table 14	
A2C53191383-K1	80PSI Oil Pressure Gauge with VDO Sender and US Thread Adapters	Table 14	
A2C53191383-K2	80PSI Oil Pressure Gauge with VDO Sender and Metric Thread Adapters	Table 14	

ISSDistribution.com - Call (800) 333-7976

See pages 54-55 for pressure senders

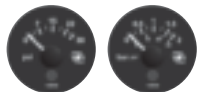
For technical specifications and dimensions, please visit our website at www.vdo.com/usa

Viewline Onyx



Viewline Onyx with black triangle bezel

Turbo & Boost Gauges, Electrical, 2 1/16" (52mm) Dia



Catalog Number	Description	See Bezel Table	See Sender Table
A2C53191728-S	2bar/28PSI Turbo Gauge 12V, Use with VDO Sender	Table 14	8
A2C53191382-S	30PSI Boost Gauge Use with VDO sender	Table 14	8

Fuel Level Gauges, Electrical, 2 1/16" (52mm) Dia



Catalog Number	Description	See Bezel Table	See Sender Table
A2C53191757-S	Fuel Gauge, Use with 3-180 Ohm Sender	Table 14	ALAS I & II
A2C53191758-S	Fuel Gauge, Use with 240-33 Ohm Sender	Table 14	ALAS I & II
A2C53191757-K	Fuel Gauge and ALAS I Fuel Sender Kit	Table 14	

Voltmeters, 2 1/16" (52mm) Dia



Catalog Number	Description	See Bezel Table
A2C53191766-S	8-16V Voltmeter	Table 14

Clocks, Electrical, 2 1/16" (52mm) Dia



Catalog Number	Description	See Bezel Table
A2C53321687-S	Analog Clock 12V	Table 14

ISSDistribution.com - Call (800) 333-7976

See pages 61-63 for ALAS I & II fuel senders

For technical specifications and dimensions, please visit our website at www.vdo.com/usa



Viewline Ivory with chrome bezel 6 gauge kit

Complete Instrument Kits

600 97466	6 Instrument Kit with GM Transmission Sender, 3 1/2" Speedometer & Tachometer. Flush Mount Application
600 97061	6 Instrument Kit with GM Transmission Sender, 3 1/2" Speedometer & Tachometer and Chrome Bezels
600 974616	6 Instrument Kit with Ford Transmission Sender, 3 1/2" Speedometer & Tachometer. Flush Mount Application
600 97066	6 Instrument Kit with Ford Transmission Sender, 3 1/2" Speedometer & Tachometer and Chrome Bezels
600 9746	5 Instrument Kit with GM Transmission Sender, 3 1/2" Speedometer. Flush Mount Application
600 970616	5 Instrument Kit with GM Transmission Sender, 3 1/2" Speedometer and Chrome Bezels
600 97461	5 Instrument Kit with Ford Transmission Sender, 3 1/2" Speedometer. Flush Mount Application
600 9706	5 Instrument Kit with Ford Transmission Sender, 3 1/2" Speedometer and Chrome Bezels

Instrument Kit Contents

- 120 MPH Electronic Speedometer with Turn Signal, Emergency Brake and High-Beam Warning Lights
- 80 PSI Oil Pressure Gauge, Electrical
- 250°F Temperature Gauge, Electrical
- Fuel Gauge
- 8-16V Voltmeter
- 221°F Temperature Switch
- 250°F Temperature Sender
- 80 PSI Pressure Sender with low pressure warning contact

- GM or Ford Speedometer Sender
- ALAS 1 6"-15" Adjustable Length Fuel Sender
- 1/8x27 NPT x1/4", 3/8" and 1/2" adapter kit for pressure sender
- 1/2" Adapter for Temperature Sender

6 Gauge Kits include matching 8,000 RPM Tachometer

See page 65 for complete wire harness assembly

Programmable Speedometers with Autocalibration & Multifunction LCD Tripodometer



Speedometers feature 1-button auto calibration programming, user defined speed warning, left and right turn signals, e-brake warning and high-beam indicator. LCD features odometer, trip odometer, voltage and clock. Accepts signal inputs from Hall Effect and inductive sender and most electronic controlled transmission outputs.

Catalog Number	Description	See Bezel Table
A2C53408300-S	120mph 3 1/2" (85mm) Electronic Speedometer with Warning Lights & Autocalibration 12/24V	Table 15

ISSDistribution.com - Call (800) 333-7976

See page 58 for speedometer senders

For technical specifications and dimensions, please visit our website at www.vdo.com/usa

Viewline Ivory



Viewline Ivory with white round bezel

Programmable Speedometers with Autocalibration & Resettable LCD Tripodometer



Speedometers feature 1-button auto calibration and user defined speed warning. LCD features odometer, trip odometer, voltage and clock. Accepts signal inputs from Hall Effect and inductive sender and most electronic controlled transmission outputs.

Catalog Number	Description	See Bezel Table
A2C53194766-S	160mph 3 3/8" (85mm) Electronic Speedometer 12/24V	Table 14
A2C53194760-S	120mph 3 3/8" (85mm) Electronic Speedometer 12/24V	Table 14

Programmable Tachometers with Multifunction LCD



Programmable tachometers feature: User defined rev. limit warning, LCD display for total hours resettable hours, voltage and clock. Accepts inputs from most electronic controlled ignitions with tachometer output terminal, standard coil ignition, alternator signal and 12V square applications.

Catalog Number	Description	See Bezel Table
A2C53194887-S	8,000 RPM 3 3/8" (85mm) Tachometer with 2 Hourmeters, Clock and Voltmeter 12/24V	Table 15
A2C53194875-S	6,000 RPM 3 3/8" (85mm) Tachometer with 2 Hourmeters, Clock and Voltmeter 12/24V	Table 15

ISSDistribution.com - Call (800) 333-7976

See page 58 for speedometer senders

For technical specifications and dimensions, please visit our website at www.vdo.com/usa



Viewline Ivory with white triangle bezel

Programmable Tachometers



Programmable tachometers feature: Accepts signal inputs from 2, 4, 6, 8, 10, 12 & 16 cylinder standard coil ignition, alternator signal and 12v square wave applications.

Catalog Number	Description	See Bezel Table
A2C53218727-S	6,000 RPM 3 3/8" (85mm) Tachometer 12/24V	Table 15
A2C53218724-S	4,000 RPM 3 3/8" (85mm) Tachometer 12/24V	Table 15
A2C53218718-S	3,000 RPM 3 3/8" (85mm) Tachometer 12/24V	Table 15
A2C53408441-S	8,000 RPM 3 3/8" (85mm) Tachometer 12/24V	Table 15

Fluid Temperature Gauges, Electrical, 2 1/8" (52mm) Dia



Catalog Number	Description	See Bezel Table	See Sender Table
A2C53191726-S	250F/120C Water Temperature Gauge 12V, Use with VDO Sender	Table 14	A
A2C53191726-K1	250F/120C Water Temperature Gauge & Sender Kit with US Thread Adapters	Table 14	
A2C53191726-K2	250F/120C Water Temperature Gauge & Sender Kit with Metric Thread Adapters	Table 14	
A2C53191370-S	250F Water Temperature Gauge, Use with VDO Sender	Table 14	A
A2C53191727-S	300F/150C Oil Temperature Gauge 12V, Use with VDO Sender	Table 14	B
A2C53191370-K1	250F Water Temperature Gauge with VDO Sender and US Thread Adapters	Table 14	
A2C53191370-K2	250F Water Temperature Gauge with VDO Sender and Metric Thread Adapters	Table 14	

ISSDistribution.com - Call (800) 333-7976

See pages 56-57 for temperature senders

For technical specifications and dimensions, please visit our website at www.vdo.com/usa

Viewline Ivory



Viewline Ivory with chrome round bezel

Outside Temperature Gauges, Electrical, 2 1/16" (52mm) Dia



Catalog Number	Description	See Bezel Table
A2C53210844-K	-10/+120F Outside Temperature Gauge with VDO Sender	Table 14

Pyrometer, Electrical, 2 1/16" (52mm) Dia



Catalog Number	Description	See Bezel Table
A2C53210905-K	1600F Pyrometer 12V with VDO Sender	Table 14

Oil Pressure Gauges, Electrical, 2 1/16" (52mm) Dia



Catalog Number	Description	See Bezel Table	See Sender Table
A2C53191745-S	80PSI/5bar Oil Pressure Gauge 12V, Use with VDO Sender	Table 14	1
A2C53191745-K1	80PSI/5bar Gauge & Sender Kit with US Thread Adapters	Table 14	
A2C53191745-K2	80PSI/5bar Gauge & Sender Kit with Metric Thread Adapters	Table 14	
A2C53191419-S	80PSI Oil Pressure Gauge, Use with VDO Sender	Table 14	1
A2C53191748-K1	150PSI/10bar Gauge & Sender Kit with US Thread Adapters	Table 14	
A2C53191748-K2	150PSI/10bar Gauge & Sender Kit with Metric Thread Adapters	Table 14	
A2C53191419-K1	80PSI Oil Pressure Gauge with VDO Sender and US Thread Adapters	Table 14	
A2C53191419-K2	80PSI Oil Pressure Gauge with VDO Sender and Metric Thread Adapters	Table 14	

ISSDistribution.com - Call (800) 333-7976

See pages 61-63 for ALAS I & II fuel senders

See pages 54-55 for pressure senders

For technical specifications and dimensions, please visit our website at www.vdo.com/usa



Viewline Ivory with black triangle bezel

Fuel Level Gauges, Electrical, 2 1/16" (52mm) Dia



Catalog Number	Description	See Bezel Table	See Sender Table
A2C53191763-S	Fuel Gauge, Use with 240-33 Ohm Sender	Table 14	ALAS I & II
A2C53191761-K	Fuel Gauge and ALAS I Fuel Sender Kit	Table 14	
A2C53191761-S	Fuel Gauge, Use with 3-180 Ohm Sender	Table 14	ALAS I & II

Voltmeters, 2 1/16" (52mm) Dia



Catalog Number	Description	See Bezel Table
A2C53191768-S	8-16V Voltmeter	Table 14

Clocks, Electrical, 2 1/16" (52mm) Dia



Catalog Number	Description	See Bezel Table
A2C53311885-S	Analog Clock 12V	Table 14

ISSDistribution.com - Call (800) 333-7976



Viewline Bezel Tables

Viewline Bezel Tables

Table 14: Viewline Bezel

Size	Color	Shape	
		Triangle	Round
2 1/16" (52mm)	Chrome	A2C53186026-S	A2C53186029-S
2 1/16" (52mm)	Black	A2C53186024-S	A2C53186027-S
2 1/16" (52mm)	White	A2C53186025-S	A2C53186028-S

Table 15: Viewline Bezel

Size	Color	Shape	
		Triangle	Round
3 3/8" (85mm)	Chrome	A2C53192918-S	A2C53192914-S
3 3/8" (85mm)	Black	A2C53192917-S	A2C53192913-S
3 3/8" (85mm)	White	A2C53192920-S	A2C53192916-S

Table 16: Viewline Bezel

Size	Color	Shape	
		Triangle	Round
4" (110mm)	Chrome	A2C53210765-S	A2C53210761-S
4" (110mm)	Black	A2C53210763-S	A2C53210749-S
4" (110mm)	White	A2C53210764-S	A2C53210760-S

All bezels are available in 10 pack bulk by changing part number suffix to a "B"



Viewline Wire Harness Tables

Table 17 - Wire Harness for 52mm Instruments & Tachometers w/o LCD

Requires (1) 8 pin connector per instrument (included with all single packs)

	Harness (connector w/ 500mm (19 1/2 in.) wire leads)	Connector & pins (for custom made harness)	Connector (bulk, no pins)	Pins (bulk)
8 Pin-single pack	240 201	240 098	-	-
8 Pin-bulk pack	240 201B	-	A2C59510847B	240 048B

Table 18 - Wire Harness for Speedometers and Tachometers with LCD

Requires (1) 8 pin connector, (1) 14 Pin connector and (1) momentary push button per instrument, (included with all single packs)

	Harness connector w/ 500mm (19 1/2 in.) wire leads)	Connector & pins (for custom made harness)	Connector (bulk, no pins)	Pins (bulk)	Push button for programming and mode functions
8 Pin-single pack	240 201	240 098	-	-	240-046
8 Pin-bulk pack	240 201B	-	A2C59510847B	240 048B	
14 Pin-single pack	240 204	240 099	-	-	
14 Pin-bulk pack	240 204B	-	A2C59510848B	240 048B	



ISSDistribution.com - Call (800) 333-7976